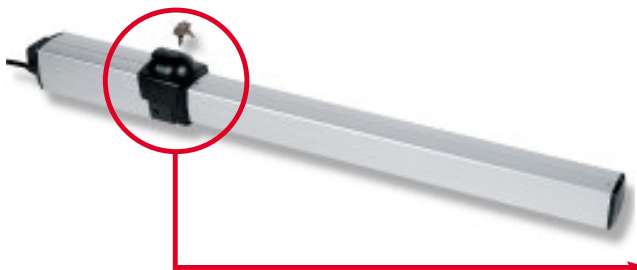




# ZT 44RF ZT 42



**Hydraulic operators for swing gates, with flow adjustment. Residential, condominium and intensive use.**



**Unique on the market. Flow adjustment device.**

**Double valve flow adjustment device for regulating gate opening and dosing speeds. Compensates for the unbalanced loads created by wind and out of plumb installation of very light and medium heavy gates.**

**The hydraulic slowdown system for gate closure can be adjusted during installation to ensure gradual and silent wing approach and to prevent structural stress.**

**The anti-crush system with ultra-sensitive bypass valves can be calibrated during installation to limit hydraulic pressure if the gate meets an obstacle, thus ensuring maximum operating safety.**

## TECHNICAL DETAILS

The emergency release system ensures good burglary protection thanks to a personalised key. The system is protected by the top cover and does not spoil the operator's attractive lines.

The rear flange with articulated aluminium fork permits flexible but sturdy assembly on the pillar.

The neoprene power supply cable is specially designed for mobile, outdoor installations.

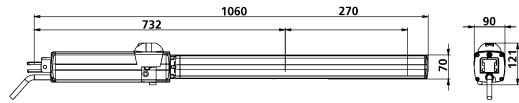
The front mounting features a uniball type ball joint. A 20 mm screw should be used during installation to adjust for any play in the mountings.

TECHNICAL DATA	ZT 42	ZT 44
POWER SUPPLY	230V - 50Hz	230V - 50Hz
VERSIONS	B - SR	A - B - C - SF RF DS
FLOW ADJUSTMENT	NO	YES
ROD STROKE	190 mm	275 mm
CLOSING SLOWDOWN	SI	SI
CLOSING AND OPENING SLOWDOWN	NO	SF RF DS
OPENING TIME*	13 SEC	20 SEC
THRUST FORCE	3850 N	3850 N
MAX WING WIDTH	1,2 m	4 m
OPERATING TEMPERATURE	-20° +70°	-20° +70°
ANTI-CRUSH SYSTEM	Bypass valves	Bypass valves
MAX CYCLES	800 cycles/day	800 cycles/day
POWER SUPPLY	250 W	250 W
WEIGHT	7,5 Kg	8 Kg
PROTECTION RATING	IP 55	IP 55

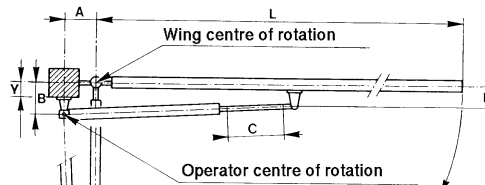
\* Regulation of the flow adjustment valves can extend opening time.



## OPERATOR DIMENSIONS



## OPERATOR POSITIONING



DIMENSIONS IN MM					
	L	A	B	C	Y (max)
ZT 44	1200 4000	130	140	275	90
ZT 42	1200	90	100	190	40

DESCRIPTION	Max wing width	CODE
ZT 44 C RF <b>With flow adjustment valves</b> Hydraulic operator with lock in dosed position.	1,8 m	63477000
ZT 44 SF RF DS <b>With flow adjustment valves</b> Hydraulic operator without lock and with double slowdown.	4,0 m	64054000
ZT 44 A RF <b>With flow adjustment valves</b> Hydraulic operator with lock in open position.	1,8 m	64053000
ZT 44 B RF <b>With flow adjustment valves</b> Hydraulic operator with lock in open and dosed position.	1,8 m	64052000
ZT 42 B (pedestrian gates) Hydraulic operator with lock in open and dosed position.	from 0,8 m to 1,2 m	63275000
ZT 42 SR (pedestrian gates) Hydraulic operator without lock.	from 0,8 m to 1,2 m	63276000

All operators are equipped with adjustable hydraulic slowdown on dosing and a personalised key release system.

IDEAL INSTALLATION	Max wing width	CODE
SET "INT" ZT 44 4M C RF	1,8 m	62937000
SET "INT" ZT 44 B RF	1,8 m	63744000
SET "INT" ZT 44 4M SF RF (electronic lock required)	4,0 m	62938000
Every package includes:		
- Two ZT 44 operators, two covers, emergency release key		
- T1E electronic control unit		
- Two TR2 433.92 MHz twin-channel transmitter		62923000
- Unico 433,92 Mhz Mem. System Radio Receiver with ant. included		62577000
- ET20N 230V flashing unit		64106000
- Pair of ER4N photocells		6635100000008
- PC12 key push button		64063000
- A primatic sign plate		A 5845000

DESCRIPTION OF OPTIONAL ACCESSORIES	CODE
TR2 433.92 MHz twin-channel transmitter	62923000
Pair of ER4N photocells	6635100000008
CAL aluminium post for ER4N photocell	63450000
433,92 MHz Antenna	62577000
Electric lock (for gates with wings wider than 1.8 m):	
- ES3 electric lock complete with ground striker plate (requires CL1 or CL2) for operators without locking (SF SR)	6606400000005
- CL1 single wing cylinder	6605800010002
- CL2 double wing cylinder	6605800010001

NOTES: For the control and safety devices, see pages 74-85. For the other installation accessories, see pages 86-87.